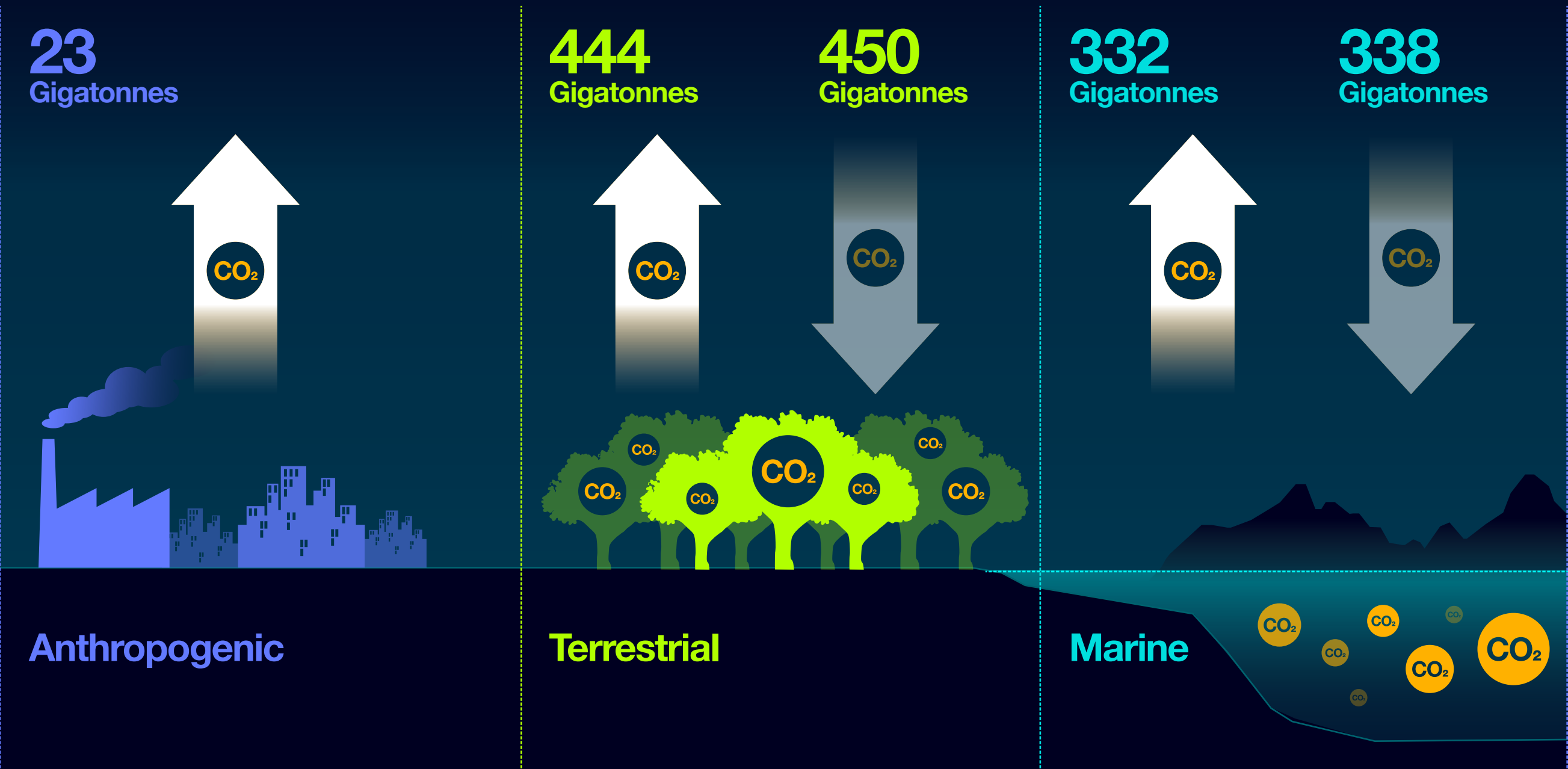


Atmospheric Carbon Dioxide (CO₂) Accumulation*

The amount of CO₂ released by humans tends to be less than that released by terrestrial and marine systems. However, total CO₂ produced is not ultimately absorbed by those systems, leaving excess gigatonnes (gt) in the atmosphere each year.

The rate of atmospheric CO₂ accumulation has steadily increased in recent decades, reaching a record high of 31.6 gt in 2011.



*Carbon Cycle (1990-1999)

SOURCE:

IPCC. 2007. Fourth Assessment Report (AR4).
International Energy Agency (IEA), 2012